

050-1900

8mm Single Rotary Latch



TriMark's newest innovation in rotary latches features a robust modular design that offers extensive actuation locations and options providing application flexibility in a compact design. Designed for medium to heavy-duty applications for on or off-highway applications, this single rotor latch meets FMVSS 206.

**DESIGNED FOR:**

- Personnel, compartment door and door hold-open applications for on and off-highway vehicles
  - Interior door thickness of 45-57mm (1.77-2.25"). Depending on the actuator type and location the overall height could be greater. Please contact TriMark for specific details.
  - Medium to heavy duty doors of 23-81 kg (50-175 lbs.) with maximum door seal pressure of 36 kg (80 lbs.)



**TriMark Corporation**  
500 Bailey Avenue  
P.O. Box 350  
New Hampton, Iowa 50659  
United States  
Tel: 641-394-3188  
Fax: 641-394-2392  
1-800-447-0343  
[www.trimarkcorp.com](http://www.trimarkcorp.com)

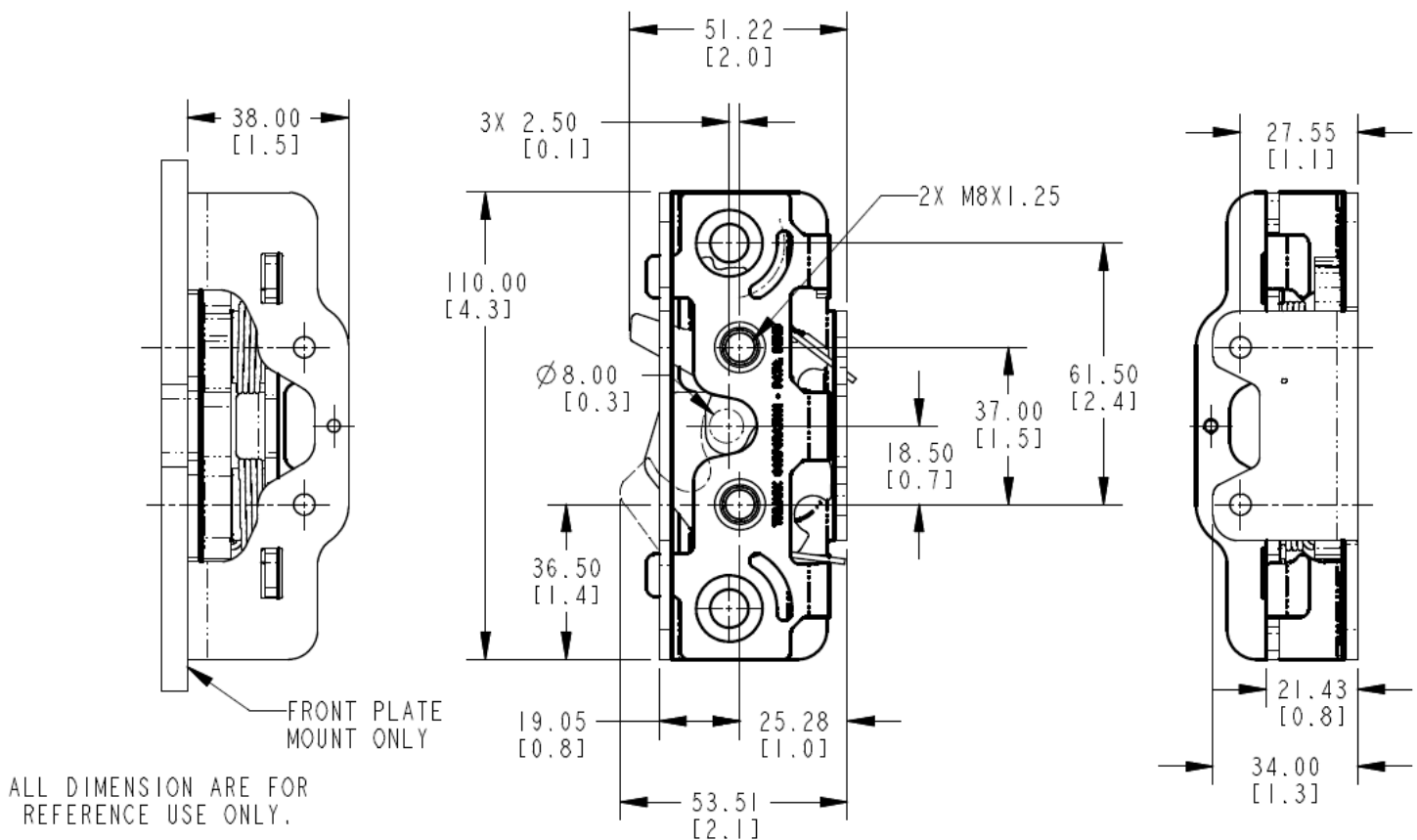
**TriMark Europe**  
Cedar Court  
Walker Road  
Bardon Hill  
Coalville LE67 1TU  
United Kingdom  
Tel: +44(0)1530 512460  
Fax: +44(0)1530 512461  
[www.trimarkeu.com](http://www.trimarkeu.com)

**FEATURES/BENEFITS:**

- Modular case construction is preconfigured with multiple actuation points on the front case allowing top/bottom actuation including stacked actuator levers providing the most configurable rotary door latch ever offered
- Compact size and shape allows maximum use of door space and minimizes visibility issues without compromising strength and robustness
- Rotor provides for vertical clearance of strike allowing for door sag, misalignment and ease of installation
- Includes 2 versions:
  - ◊ Two position rotor version for personnel door for FMVSS 206 applications
  - ◊ Single position version for compartment and door hold-open for non FMVSS 206 applications
- 8mm diameter automotive style hoop-type strike minimizes clothing snag hazard

**AVAILABLE:**

- In left or right hand configurations (right hand shown)
- Versions are available to allow direct actuation from exterior push button or pull handles and interior releases providing a simple, low cost and compact application
- Platform allows for reuse of TriMark's extensive selection of existing actuation levers reducing application engineering and tooling requirements
- Several actuator return spring options
- Coaxial actuator mechanism for applications where it is desirable to provide additional support to the actuation levers
- Innovative barrel release with optional integrated cable bracket for ease of use/installation
- Future provisions for state sensing, power release mechanisms and slam cam door lift mechanism



**Base Latch Shown Without Actuators**

#### **MATERIAL:**

- Case halves: high strength steel
- Rotor and catch: heat treated steel
- Springs: non-corrosive stainless steel

#### **FINISH:**

- Zinc plated, clear chromate steel components

#### **INSTALLATION:**

- Easy to install, mounts with (2) M8 x 1.25 class 8.8 or better fasteners are required for FMVSS 206 applications (not included)
- Tighten to manufacturers' recommended torque value, however, do not exceed 22.2 N-m (200 in-lbs)

#### **USE WITH:**

- TriMark 070-1000 8mm Hoop Strike (required for FMVSS 206 applications)

#### **Patent(s) Pending**

Applications of this latch may fall within the requirements of FMVSS 206 and SAE J839 safety standards. These safety related requirements are dependent on door application, e.g. front and rear hinged doors, sliding doors, or hinged upward swinging doors. The entire door hardware system must be included in the design/analysis process: latch, handle, lock mechanism, cables/rods/linkages, fasteners, hinges, etc. This ensures compatibility of all components within the hardware system. If FMVSS 206 is a requirement, then all of the components within the door system must comply with strength, inertia and locking requirements as specified within the Standard. Note that this product complies with FMVSS 206 when tested with approved TriMark Striker Bolts in accordance with SAE J839 and that this product meets FMVSS 206 load requirements and may be used in FMVSS 206 applications pending TriMark application approval.

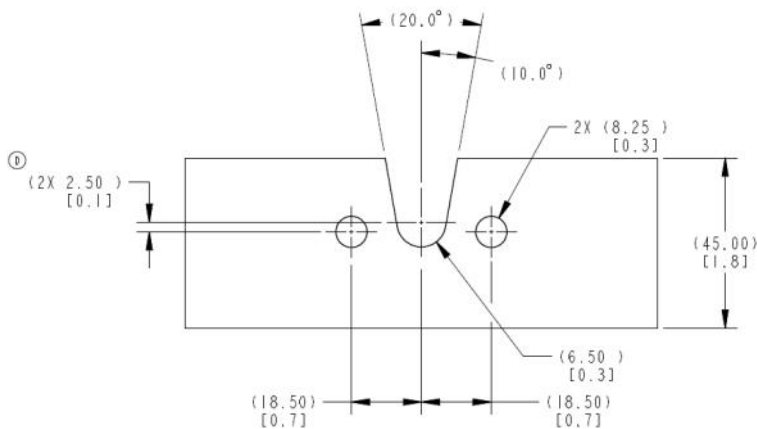
Individual part dimensions are for reference only. Refer to individual part drawings for complete dimensions, specifications, and installation procedures. Engineering assistance and application drawings are available.



**Barrel Actuation With Direct Release Cam and Top Direct Release Actuator**



**Cable Mount Bracket With Barrel Actuation and Cam**



ALL DIMENSION ARE FOR  
REFERENCE USE ONLY.

**CUTOUT**

**Mounting Details**



**070-1000 8mm Hoop Strike**

Modular construction with multiple actuation points allows top/bottom actuation including stacked actuators as well as combinations of actuation points.

